

Introducing **BUDDY & KETO!**

Buddy and Keto are best friends, and they have been diagnosed with diabetes.

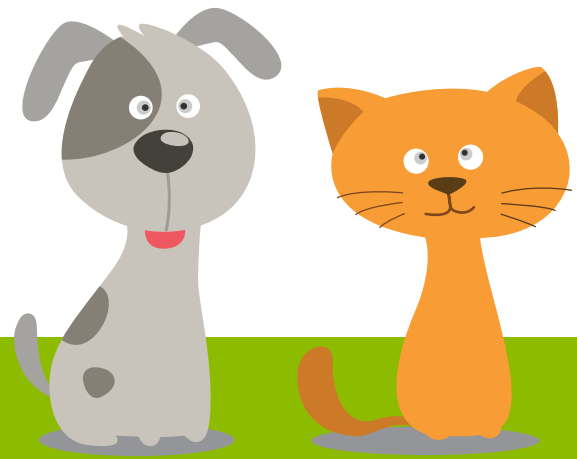
Follow their journey to learn about diabetes in dogs and cats, to better manage your pet's diabetes and help them live a healthier and happier life.



Brought to you by Healthy Tracks for Pets™.

Diabetes in Dogs and Cats

As a pet owner, it is important to know that pets can develop diabetes at any stage in their life. Diabetes mellitus is a serious medical condition in which a pet's body cannot control blood sugar levels due to problems with insulin production or function.¹



Types of Diabetes

Be aware, that there are two major types of diabetes in dogs and cats, Type 1 and Type 2.



Also known as insulin deficiency, requires insulin administration because the body is not able to produce insulin.²



Also known as insulin resistant diabetes; happens when the pancreas makes insulin, but the body's cells do not respond to the insulin.²

Most Common Signs of Diabetes in Dogs and Cats³



Excessive Water Drinking

Your dog or cat is drinking much more water than usual.



Sudden Weight Loss

Your dog or cat may show an increase in appetite, but it keeps on losing weight.



Increased Urination

Your pet wants to go outside more than usual.



Cloudy Eyes

You may notice cloudy eyes on your pet, especially in dogs.



Decreased Appetite

Your dog or cat is not eating as usual.



Chronic or Recurring Infection

You may notice skin or urinary infections in your dog or cat.



Remember to always contact your veterinarian if you notice any changes in your pet's behavior or have any questions about your pet's health or diabetes management.



Be on the lookout for additional topics, to learn more about diabetes in dogs and cats with Buddy and Keto!



Visit www.healthy-tracks.com to learn more!